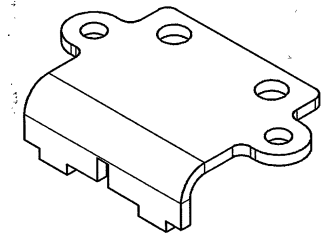


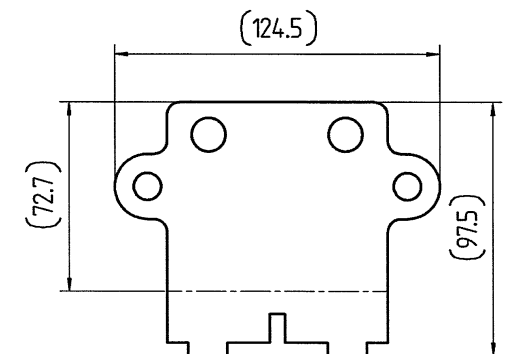
# PŘEKLAD

dne: 25 -11- 2016

PROVEDLIA  
JANA PROKEŠOVÁ



SKLÁDÁNÍ  
PICTORIAL VIEW



ROZVINUTÝ POHLED  
DEVELOPMENT VIEW

-5 -12- 2016  
ARCHIV

LM/16/012.18

STAV ZODPĚDÍ:  
BEZ OTRPĚV  
BEZ NÁSTROJŮ

Condition at time of delivery	
de-scaled (degree of purity SA 2 1/2 acc. ISO 8501-1)	...
without burrs acc. WN 11310	X
Permissible top-end rounding during flame cutting (also positive bead acc. WN 10572)	...
oil-free / free of grease	X
oiled	...
oiling permissible	...
Indicate the required condition at time of delivery with an X.	

POKUD NENÍ UVEDENO JINAK, VŠECHNY  
POVRCHY  
UNLESS OTHERWISE SPECIFIED ALL  
SURFACES TO BE

First angle projection	01	State was RFQ	STAV BYL RFQ	T81834			
General tolerance (GT) in mm	Index	alteration	Change no	Fit	Toler.		
Size range	Inspection dim.	Material: BS EN 10025 S275JR		Weight: in kg			
≤ 30	≤ 30	Blank no:		0.33			
30 < L ≤ 120	120 < L ≤ 400	Title: support		Prod. Scale			
120 < L ≤ 400	400 < L ≤ 1000	Drawing number		1:1			
1000 < L ≤ 4000	L > 4000	14 014 311822		1:2			
GT coarse	Lengths (L) and angle (L/Δ) = ± GT	Repl.		Orig.			
L 1 2 2 3 4	Δ 1 2 4 6	Confidential document		14.32172/D02D/001/01			
GT fine	Tolerance Symbols ISO 1101	Refer to protection notice ISO 16016		A3			
○ roundness = 1/2Δ - Tol.	□ straightness/flatness = GT						
⊙ concentricity/run out = GT	≡ symmetry = GT						
∥ parallelism = GT	⊕ position = GT						
⊕ position = GT							

Released

14.32172/D02D/001/01

A3

14.014.311822/01END001